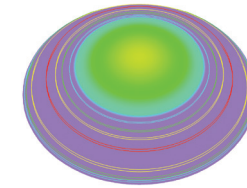


easyvision® orba multifocal fitting guide

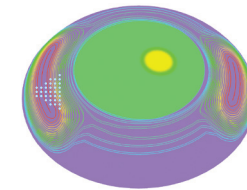


- 1. Up to date spectacle prescription:** The essential starting point
 - **Best vision sphere:** Compensate for any astigmatism up to 1.00DC
 - **Max plus and binocular balance:** Eyes relaxed and ready
 - **Vertex Distance:** For +/- 4.00D or greater
- 2. ADD power:** Lowest Add for near vision needs e.g. mobile, tablet, PC
- 3. Dominant eye:** Use the +1.00D blur method
- 4. Initial lens selection:** Select your initial lens based on your wearer's ADD



LOW

Centre near vision
Natural transition through near, intermediate and far



HIGH

Decentred near zone
Dynamic stabilisation zones
Temporal indicator

Initial lens selection		Near vision enhancements		Distance vision enhancements		OR	Distance vision enhancements	
Add	Dominant eye	Non dominant eye	Dominant eye	Non dominant eye	Dominant eye	Non dominant eye	Dominant eye	Non dominant eye
+0.75 to +1.50								
+1.75 to +2.50								

Distance vision enhancements are generally not needed for wearers of the HIGH design due to the decentred near vision zone.

DONT FORGET!

10 minutes 'real world' adaptation

HIGH design temporal locator mark
Triangle pointing to ears!

HIGH design